

# Media Fact Sheet



Yangon International Airport

Development Project

Terminal 1



## TERMINAL 1 SNAPSHOT

Terminal 1 (T1) is a mixed-use complex featuring international brands at retail outlets, quality F&B restaurants, facilities for airport operations and premium lounges.

The development will have a total gross floor area (GFA) of approximately 100,000 sqm.

FACILITIES	DETAILS
<b>Facilities for airport operations</b>	T1 offers 24 offices across 1,300 sqm for airlines and airport support operations
<b>Retail outlets</b>	Spanning over 7,800 sqm, T1 has 50 retail outlets comprising established international brands
<b>F&amp;B restaurants</b>	T1 serves 16 dining options across 3,400 sqm
<b>Lounges</b>	Premium lounge space for passengers to enjoy a higher level of comfort

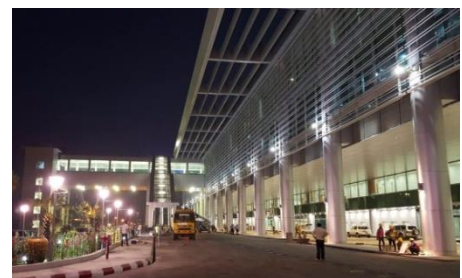
	T1
<b>Floor Area</b>	100,000 sqm
<b>Annual Passenger Handling Capacity</b>	20 million
<b>Check-in Counters</b>	60
<b>No. of Aerobridges</b>	4
<b>Remote Gates</b>	2
<b>Carparks</b>	Over 800

The new T1 sits on a floor area of 100,000 sqm and is designed to employ up to 2,000 people in peak capacity. With the expansion in capacity and continued integration of facilities, YIA will be equipped to handle up to 20 million passengers per annum to cater for the future demand for air services.

Passengers will be spoilt for choice with new retail outlets and F&B restaurants. The new terminal will also offer free internet terminals and airport-wide Wi-Fi.

## UNIQUE FEATURES

- T1 includes unique features that are designed to keep the airport at ideal temperatures, as it will face both tropical heat and rain as well as a cool season. These include a roof architecture which allows optimal natural light and warmth into the building via skylight openings.
- The airport is also outfitted with natural lighting which shines through its glass façade to promote an intuitive experience for passengers navigating the airport. This openness provides warmth to the airport, and creates a pleasant and comfortable environment.
- T1 showcases Myanmar's first Sky Mall where members of the public can shop and dine at its top floor. With an abundance of restaurants and retail shops, the Sky Mall can be accessed easily via the Sky Link which is connected to the carpark.
- Traveling through Yangon will never be boring anymore. Our Retail Avenue will provide travelers with access to several renowned brands, and a Food Hall in the transit area with an array of F&B options.
- Our new centralized security & In-line baggage screening systems provide greater convenience for our passengers, and ultimately saves them time.



# Yangon

largest city

primary trade center & economic hub

 >7.2 million



Area

676,000 km<sup>2</sup>

 56 Million  
Population

3 International Airports


33 Operational Airports

69 Aerodromes

# Nay Pyi Taw

political capital

geographic heart of Myanmar

 >1.5 million

With approximately 56 million people and sharing borders with India, China, Thailand, Bangladesh and Laos, Myanmar offers an abundance of culturally diverse travel destinations. This, coupled with the country's on-going economic reforms, offers an exciting time for the tourism industry in Myanmar for both leisure and business.

Currently, Yangon International Airport serves 28 international airlines and its top three travel destinations include Bangkok, Thailand; Singapore; and Kuala Lumpur, Malaysia.

Myanmar has three international airports in Yangon, Nay Pyi Taw and Mandalay.

## YIA OPERATING STATISTICS

 28

International airlines

 655

weekly flights

 servicing 22 international destinations

4.68 m  
 passengers in 2015

 10 domestic airlines

Date	Milestone
Apr 2014	Work commences on YIA Development project Excavation & foundation works
Dec 2014 – Dec 2015	Construction of basement level, ground floor, first floor, second floor, third floor and roof structure Construction of Carpark A, B and Taxi Pool Construction of Chiller Plant & Cooling Tower, and High Tension Building
Jan – Dec 2015	Construction of 4 and 6-lane access roads around airport
May – Dec 2015	Construction of Sewage Treatment Plant Building
Jun – Dec 2015	Construction of Link Bridge
Aug – Dec 2015	Construction of Ground Water Tank
Mar 2014 – Dec 2015	Construction of North Roundabout
May 2014 – Dec 2015	Construction of South Roundabout
Jan & Feb 2016	Completion of façade, internal & Mechanical & Electrical works

**272**   
Engineers  
& Staff

**135**   
Security  
officers

**57**   
Road &  
Store staff

More than  
**2,000**   
Direct and  
sub-contractors

Up to  
**4,000**  
Total  
workers   
at its peak



DEVELOPMENT MILESTONES

In 2013, an Airport Master Plan was developed to serve as a guide for all developments at the Yangon International. This will be done in three phases.

Phase 1: First part of the Yangon International Airport's new passenger terminal T1, and the new Link Bridge. Works for the new Domestic Terminal have also started.

Phase 2: Extension of the new T1, as well as construction of VIP and CIP Terminal.

Phase 3: T1 will be further expanded and an airport city is also included in the plans.

Date	Milestone
25 October 2012	The Department of Civil Aviation (DCA) announced the Invitation to Prequalification document in The New Light of Myanmar Newspaper
8 February 2013	DCA announced 11 companies which have prequalified on 7 & 8 Feb 2013
25 April 2013	Prequalified companies submit their proposals
10 August 2013	DCA announced the Qualified Tenderer YACL for the Yangon International Airport Development (YIAD) project in the newspapers – The New Light of Myanmar and The Mirror
6 August 2014	MIC approved the YIAD Project Proposal
6 January 2015	Signing Ceremony between DCA & YACL for the Concession Agreement
21 August 2015	MIC approved the Amendment of YIAD Project Proposal
7 December 2015	Signing Ceremony between DCA & YACL for the Amendment Agreement of the Concession Agreement